

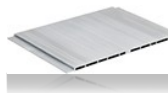
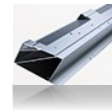
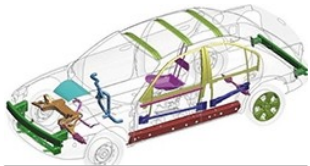
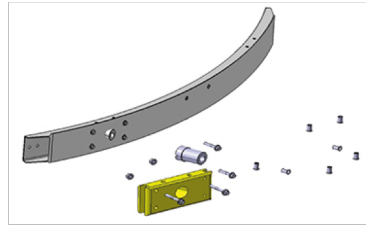


INDUSTRIAL ALUMINUM PROFILES

Director: David Tao
Email: junqingtao@vip.163.com / info@junyinmarine.com
Web: www.junyinmarine.com
Mob : +86-15190329088 **Phone.:** +86 510 86659088
Office: Room 818, No 288 Huangshan Road, Jiangyin, Jiangsu, China

AUTOMOTIVE

Selection of high quality F21 (3A21) aluminum rod production, whether it is the high pressure pipe, low pressure pipe and other parts of the size of the excellence, length scale accurate.



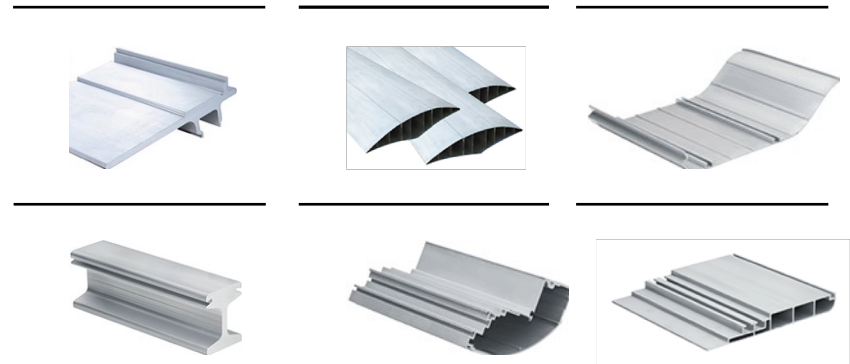


**BODY
PROFILE**

Selection of high quality F21 (3A21) aluminum rod production. whether it is the high pressure pipe. low pressure pipe and other parts of the size of the excellence. length scale accurate.

RAILWAY

Selection of high quality F21 (3A21) aluminum rod production. whether it is the high pressure pipe. low pressure pipe and other parts of the size of the excellence. length scale accurate





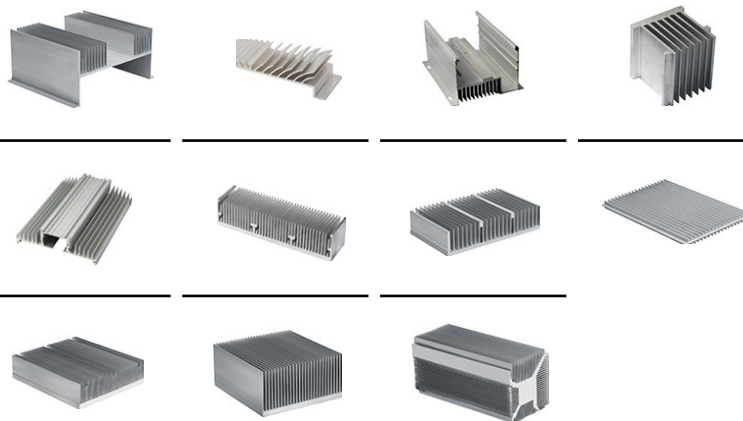
SHIP SHAPE

Selection of high quality F21 (3A21) aluminum rod production. whether it is the high pressure pipe. low pressure pipe and other parts of the size of the excellence. length scale accurate



RADIATOR

Selection of high quality F21 [3A21] aluminum rod production. whether it is the high pressure pipe. low pressure pipe and other parts of the size of the excellence, length scale accurate





Motor housing



Assembly line



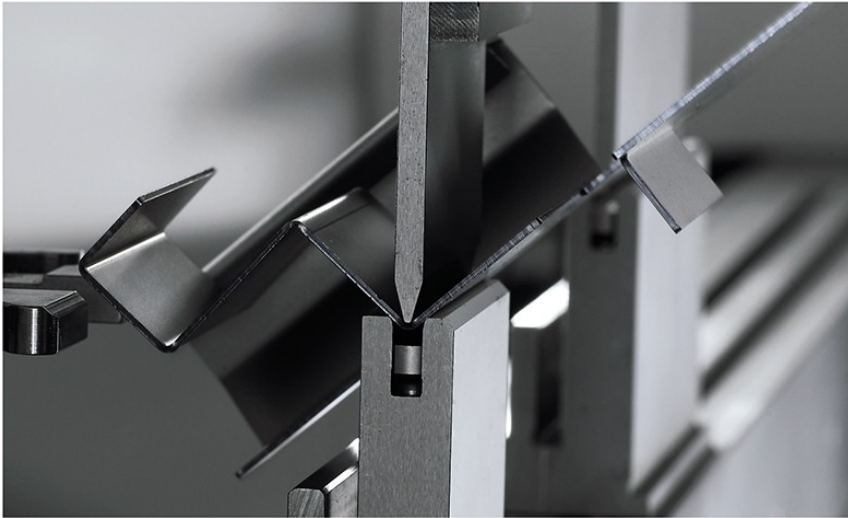
Elevator profile

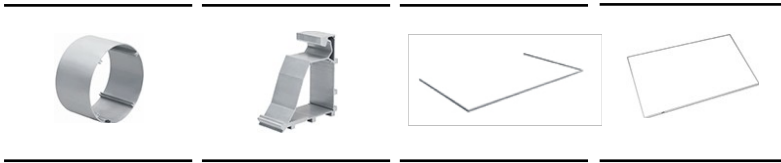


Cylinder pipe (pneumatic actuator)

MACHINERY MANUFACTURING

Selection of high quality F21 (3A21) aluminum rod production. whether it is the high pressure pipe, low pressure pipe and other parts of the size of the excellence, length scale accurate





ELECTRONIC COMMUNICATIONS

Printer



Lampprofile



Mobilephone shell



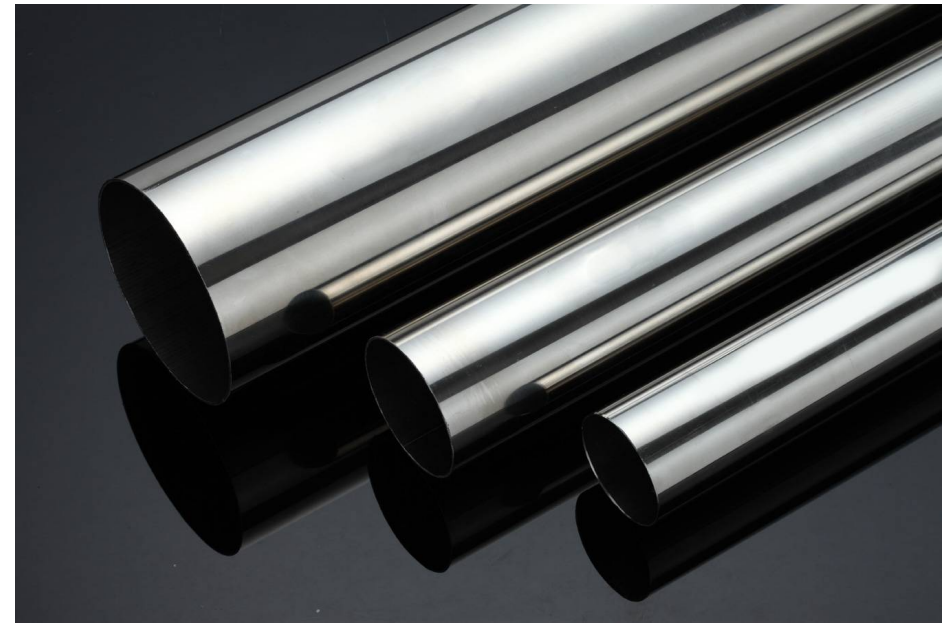
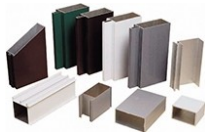
BUILDING ALUMINUM FORMWORK



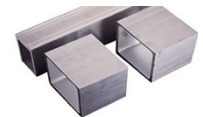
ASSEMBLY LINE
PROFILE



PROFILED BAR



TUBE/BAR





APPLICATION AREA

Rail transit

Ship
manufacturing
Auto
parts
Aerospace

Machinery
manufacturing

Electronic
communication
Energy and electric
products
Photovoltaic energy

Homebuilding materials

Building aluminum membrane
plate





PRODUCTION CAPACITY

6800T press/6800T UBE East China's largest imports of positive and reverse automatic extrusion production line





PRODUCTION CAPACITY

3600T press/3600T UBE imported fullautomatic extrusion production line



UBE 3600T
Fullautomatic extrusion
productionline

2500T press

1650T
press
1000T press

500T
press
600T
press



PRODUCTION CAPACITY

CNC Machining Center





268 台Sets
CNC

PRODUCTON CAPACITY

CNC Machining Center



5 条Strip
氧化线 ANODIZING

PRODUCTION CAPACITY

We have two anodizing lines at present,
and the max anodize length is 7.5m
We have complete mature technology on
hard alloy surface treatment.



企业篇 Business articles



PRODUCTION CAPACITY DISTRIBUTION PACKAGING



FACTORY



企业篇 Business articles